

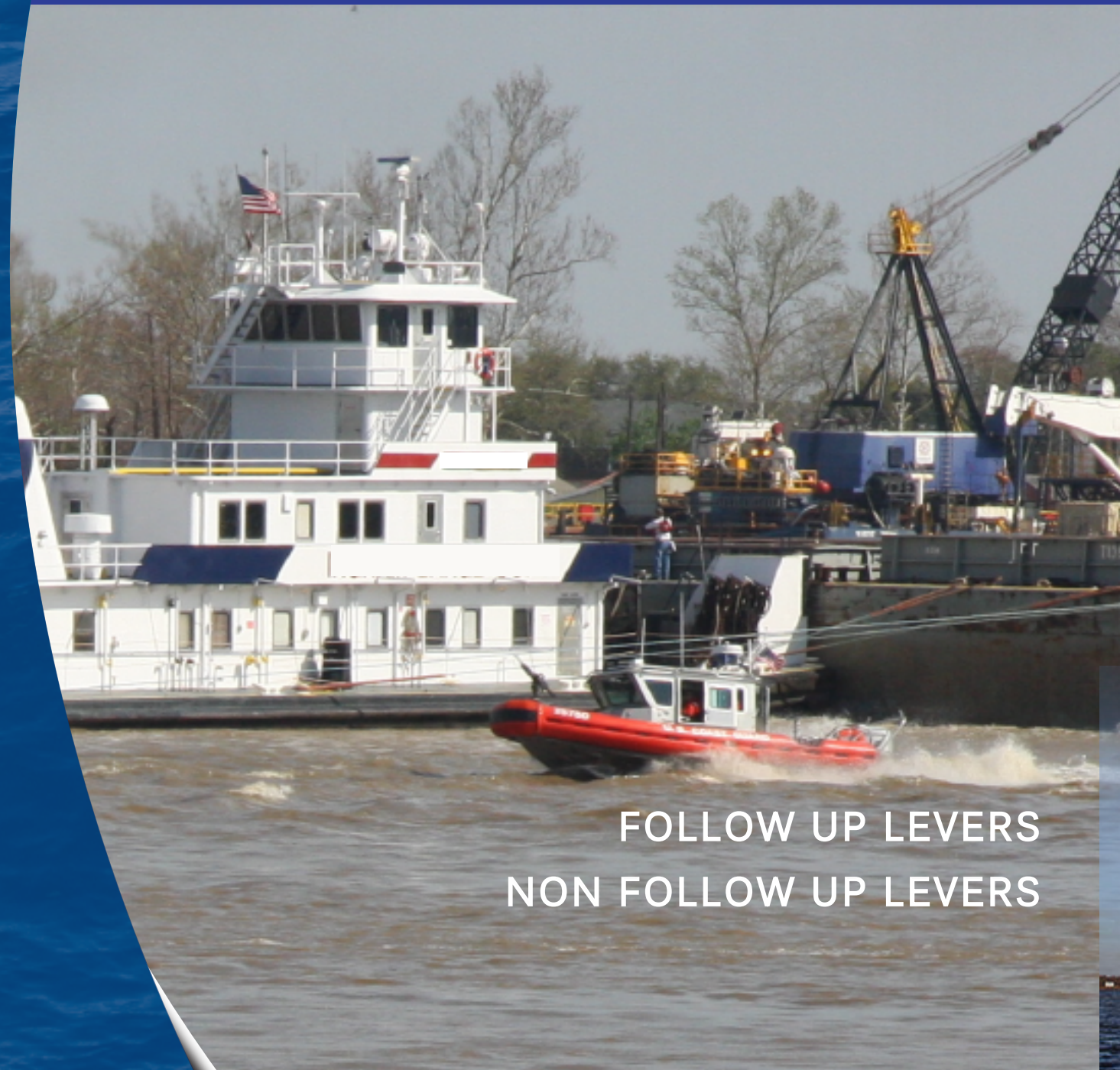
PROVEN DURABILITY
AND RELIABILITY FOR
MARINE ENVIRONMENTS



STEERING LEVERS



191 JAMES DRIVE WEST
ST. ROSE, LOUISIANA 70087
TEL : +1 504.620.9800
FAX : +1 504.620.9801
emonitor@emi-marine.com



FOLLOW UP LEVERS
NON FOLLOW UP LEVERS



RETROFIT STEERING

Convert your mechanical system to electro over hydraulic for system redundancy. Meets all upcoming Sub-Chapter M requirements. EMI can manufacture custom hydraulic steering systems for vessels of all shapes and can be configured to almost any vessel requirement.

The objective is to match existing the steering system to the requirements of the vessel. This depends on the following vessel characteristics:

- Type of Vessel
- Number of Engines and Rudders
- Total Horsepower
- Speed of Vessel
- Rudder Size

► EMI can meet any specification necessary to provide a quality steering system to meet any need. Below are examples of custom hydraulic system features:

- H.P Limiting
- Bang Bang Traditional Valves
- Dc Motors
- Independent Rudders
- Jockey Bar Rudders
- Multi Flow Adjustable Pumps
- Stainless Steel Tanks
- Aluminum Tanks
- Air Flow Oil Cooler
- Electric Oil Heaters
- Gravity Fed Tanks
- Proportional Valves



www.emi-marine.com

ADVANTAGES

- Lower Operating Cost
- Higher Reliability
- System Redundancy

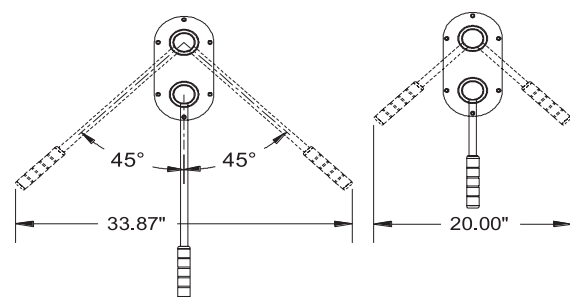
INTERFACE & INTERGRATION

EMI routinely provides interfacing and integration support to:
Dynamic Positioning Systems
Autopilots
Classification

STEERING / FLANKING FULL FOLLOW UP LEVER PART NO.49730



- Stainless steel steering sticks with Spanish mahogany grips available in two lengths.
- 90 degrees of travel.
- Durable Stainless steel hubs mounted on Powder-coated Panel.
- 0 to 3 potentiometer layers/lever can be specified to support a wide range of steering.
- Life expectancy of 1,000,000 rotations typical.



23-5/8" LEVERS

13-5/8" LEVERS

FOLLOW UP & NON FOLLOW UP STEERING LEVERS

SMALL NON FOLLOW UP JOYSTICK PART NO. 9999-51100



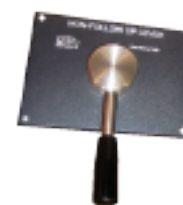
- Compact Size
- Single Speed
- IP65 (Front Face)

STANDARD NON FOLLOW UP JOYSTICK PART NO. 9999-23500



- Standard Jog Lever
- Single Speed
- IP66 (Front Face)

FLUSH MOUNT NON FOLLOW UP LEVER PART NO. 9999-47150



- Stainless Steel Handle
- Dual Speed
- Horizontal / Vertical Mounting
- Gasket Available for Outdoor
- Mounting

COMPACT FULL FOLLOW UP LEVER PART NO. 51880



- Durable stainless steel handle and space saving Black anodized 1/4 DIN enclosure.
- Neutral detent.
- 1-6 layer potentiometer models support wide range of vessel configurations.
- Life expectancy of 1,000,000 rotations typical.
- LED backlit illuminated legend in ranges of 35°, 40°, 45°, 60°, and 65° available. Other ranges available upon request.
- Horizontal / Vertical and FWD/AFT facing mounting orientations supported.

NON FOLLOW UP LEVER, DIN PART NO. 9999-51890



- Compact DIN Enclosure.
- Stainless Steel Handle.
- Dual Speed.
- Legends Support Horizontal / Vertical, FWD/AFT Mounting.
- Gasket Available for Outdoor Mounting.

SMALL FULL FOLLOW UP JOYSTICK PART NO. 9999-51100



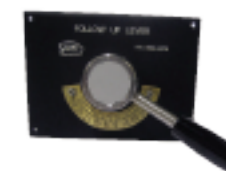
- Isolated Dual 5K Potentiometer Outputs
- High Impact resistant Polyamide enclosure
- 20 ft Cable, coiled or standard options available
- IP65 - Ingress Protection Wall Holder Included
- Option Receptacle & Plug available

SMALL NON FOLLOW UP JOYSTICK PART NO. 9999-51100



- Dual Isolated Switch Contacts
- High Impact resistant Polyamide enclosure
- 20 ft Cable, coiled or standard options available
- IP65 - Ingress Protection
- Wall Holder Included
- Option Receptacle & Plug available

FLUSH MOUNT FULL FOLLOW UP LEVER PART NO. 44750



- Durable Stainless Handle and Powder-coated Panel.
- Neutral detent.
- 1-7 layer potentiometer models support wide range of vessel configurations.
- Life expectancy of 1,000,000 rotations typical.
- 316 stainless steel legend plates in ranges of 35°, 40°, 45°, 60°, and 65° available. Other ranges available upon request.
- Horizontal and vertical mounting.

FULL FOLLOW UP WHEEL UNIT PART NO. 48920



- Expects any wheel with 1" straight shaft & 1/4" Keyway.
- Shaft clutch allows for continuous wheel rotation.
- Used in combination with rudder order indicator (ROI).
- Comes standard with three (3) 5K potentiometers for redundant systems and ROI input, other configurations available upon request.